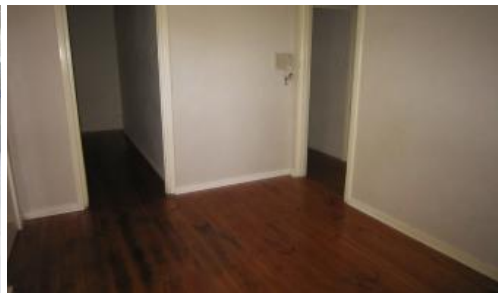




Elizabeth South



INVESTORS HERE IT IS

Currently leased @ \$210.00 per week until November 2021

New weekly rental increase to \$260-\$270 per week

Situated in an ideal location is this inviting investment package with great return.

Benefits include entry hall through to formal lounge, neat electric kitchen and meals area.

The sleeping quarters are well catered for with 3 good sized bedrooms.

The home is tastefully decorated with neutral décor and quality fixtures and fittings.

Simply a great package to add to your investment portfolio.

Specifications

CT -5191/934

Council – City of Playford

Zoning – Residential (MP)

Built – 1961

Land – 506m²

Building – 82m²

Council Rates – \$1306.05 pa

 3  1  1  506 m²

Price	SOLD
Property Type	Residential
Property ID	1388
Land Area	506 m ²
Floor Area	82 m ²

Agent Details

Romeo Riccio – 0412 846 021

Office Details

SALISBURY
42 Ann Street Salisbury SA 5108
Australia
08 8281 4999



SA Water - \$165.84 pq

ESL - \$721.90 pa

Make an appointment to view today

For further enquiries call Romeo Riccio direct on 0412 846 021

LARCOR Real Estate, 42 Ann Street, Salisbury SA 5108

RLA154447

Disclaimer: All information provided (included but not limited to the properties land size, floor plan and floor size, building age and general property description) has obtained been obtained from sources deemed reliable, however, we cannot guarantee the information is accurate and we accept no liability for any errors or oversights. Interested parties should make their own inquiries and obtain their own legal advice.

The above information provided has been furnished to us by the vendor/s. We have not verified whether or not that information is accurate and do not have any belief in one way or the other in its accuracy. We do not accept any responsibility to any person for its accuracy and do no more than pass it on. All interested parties should make and rely upon their own inquiries in order to determine whether or not this information is in fact accurate.