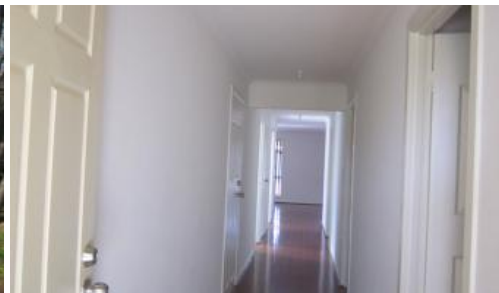




## Andrews Farm



### KNOCK KNOCK INVESTORS WAKE UP!!

Currently Leased @ \$305 per week til September 2021

Inviting Villa with the lot!

- Rendered frontage
- Entry hall
- Three good sized bedrooms (main BIR)
- Modern kitchen, gas hotplate, pantry, dual sink, dishwasher, breakfast bar
- Relaxing family room, reverse cycle split air conditioner, laminate floors
- Ducted evaporative air conditioner
- Fresh neutral decor
- Garage under main roof - roller door
- Verandah
- Toolshed
- Private secure 438m2 allotment
- Oposite reserve and walking trails

By appointment only

#### Specifications

CT -5965/128

Council - Playford Council

Zoning - Residential

🛏 3 🚿 2 🚗 1 📏 438 m2

|               |             |
|---------------|-------------|
| Price         | SOLD        |
| Property Type | Residential |
| Property ID   | 1317        |
| Land Area     | 438 m2      |

#### Agent Details

Romeo Riccio - 0412 846 021

#### Office Details

SALISBURY  
42 Ann Street Salisbury SA 5108  
Australia  
08 8281 4999



Built - 2006

Land -438m2

Building - 146m2

Council Rate - \$1609.10 pa

SA Water - \$251.00 pq

ESL - TBC

Make an appointment to view today

For further enquiries call Romeo Riccio direct on 0412 846 021

LARCOR Real Estate, 42 Ann Street, Salisbury SA 5108

RLA154447

Disclaimer: All information provided (included but not limited to the properties land size, floor plan and floor size, building age and general property description) has obtained been obtained from sources deemed reliable, however, we cannot guarantee the information is accurate and we accept no liability for any errors or oversights. Interested parties should make their own inquiries and obtain their own legal advice.

The above information provided has been furnished to us by the vendor/s. We have not verified whether or not that information is accurate and do not have any belief in one way or the other in its accuracy. We do not accept any responsibility to any person for its accuracy and do no more than pass it on. All interested parties should make and rely upon their own inquiries in order to determine whether or not this information is in fact accurate.