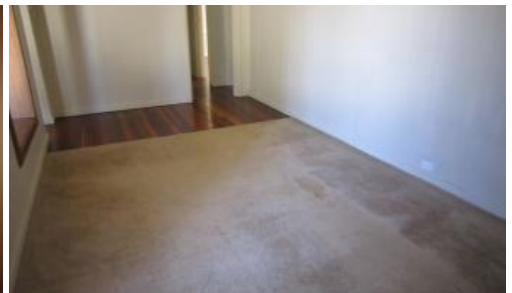
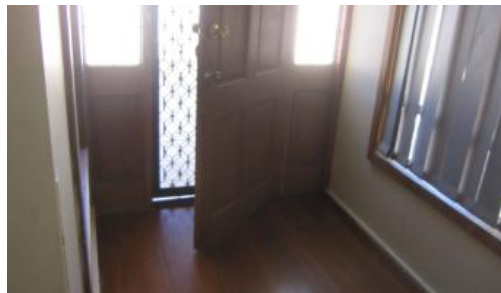




Elizabeth North



SEMI WITH THE LOT !!

Investors only please

Currently leased @ \$275 per week until March 2022

Situated amongst quality homes is this solid brick, iron roof semi detached home that is updated and ready to add to your investment portfolio.

Offer entry hall through to a large formal lounge with reverse cycle air conditioner.

There are three generous size bedrooms built in robes to all

The new electric kitchen/dine offers plenty of room at meal time.

All the wet areas bathroom/toilet/laundry have been updated.

The home is tastefully decorated throughout with quality fixture and fittings.

Exterior benefits include verandah, patio, double garage 9.0x6.0m concrete all on a versatile 984m2 allotment.

By appointment only

Specifications

CT -5416/484

Council - Playford Council

Zoning - Residential

Built - 1960

🛏 3 🚿 1 🚗 2 📏 984 m2

Price	SOLD
Property Type	Residential
Property ID	1279
Land Area	984 m2
Floor Area	125 m2

Agent Details

Romeo Riccio - 0412 846 021

Office Details

SALISBURY
42 Ann Street Salisbury SA 5108
Australia
08 8281 4999



Land -984m2

Building - 125m2

Council Rate - \$1312.45 pa

SA Water - \$250 pq

ESL – TBC

Make an appointment to view today

For further enquiries call Romeo Riccio direct on 0412 846 021

LARCOR Real Estate, 42 Ann Street, Salisbury SA 5108

RLA154447

Disclaimer: All information provided (included but not limited to the properties land size, floor plan and floor size, building age and general property description) has obtained been obtained from sources deemed reliable, however, we cannot guarantee the information is accurate and we accept no liability for any errors or oversights. Interested parties should make their own inquiries and obtain their own legal advice.

The above information provided has been furnished to us by the vendor/s. We have not verified whether or not that information is accurate and do not have any belief in one way or the other in its accuracy. We do not accept any responsibility to any person for its accuracy and do no more than pass it on. All interested parties should make and rely upon their own inquiries in order to determine whether or not this information is in fact accurate.